



School for Rudolf Steiner Education Ltd

## School Fee Schedule



**2018**

## Lorien Novalis - Preschool fees

### Enrolment fee - Preschool

<b>Expression of Interest – Application fee</b>	<b>\$110 Inc GST</b>
<b>Non – refundable Enrolment fee (per family)</b>	<b>\$1,100 Inc GST</b>

Non refundable family enrolment fee, determined by eldest child in the family on enrolment  
 Invoiced on enrolment, payable before commencement  
 Enrolment fee is paid once, per family with continuous enrolment in the school

### Preschool fees - 2018 Term 4

#### Children aged three to five

#### Charged by term:

<b>1 day attendance per term</b>	<b>\$585</b>
<b>2 day attendance per term</b>	<b>\$1,170</b>
<b>3 day attendance per term</b>	<b>\$1,755</b>
<b>4 day attendance per term</b>	<b>\$2,340</b>

Preschool is a registered Child Care provider  
 No rebates are available and No Child Care Benefit funding is available  
 Invoiced 14 days before first day of term, Payable on first day of term  
 Families with other siblings enrolled receive \$5 discount per day  
 Change in daily attendance must be advised before the end of term.

## Lorien Novalis - School fees

### Enrolment fees – Kindergarten to Class 12

<b>Expression of Interest – Application fee</b>	<b>\$110 Inc GST</b>
<b>Non – refundable Enrolment fee (per family)</b>	
<b>Kindergarten to Class 7</b>	<b>\$1,100 Inc GST</b>
<b>Class 8 to Class 12</b>	<b>\$1,650 Inc GST</b>
<b>High school starter kit – per child</b>	<b>\$120 No GST</b>

Non refundable family enrolment fee, determined by eldest child in the family on enrolment  
 Invoiced on enrolment, payable before commencement  
 Enrolment fee is paid once, per family with continuous enrolment in the school

### School fees – Kindergarten to Class 12

<b>Class</b>	<b>Tuition fee</b>	<b>Materials &amp; Activities</b>	<b>Total per term fee</b>	<b>Class trips*</b>	<b>Levies</b>	<b>Total Annual fee</b>
<b>Kindergarten</b>	\$2,195	\$120	\$2,315			\$9,260
<b>Class 1</b>	\$2,195	\$120	\$2,315	\$70		\$9,330
<b>Class 2</b>	\$2,195	\$120	\$2,315	\$150		\$9,410
<b>Class 3</b>	\$2,195	\$120	\$2,315	\$380		\$9,640
<b>Class 4</b>	\$2,195	\$120	\$2,315	\$380	\$50	\$9,690
<b>Class 5</b>	\$2,195	\$120	\$2,315	\$1,000		\$10,260
<b>Class 6</b>	\$2,195	\$120	\$2,315	\$1,000		\$10,260
<b>Class 7</b>	\$2,195	\$120	\$2,315	\$1,800	\$200	\$11,260
<b>Class 8</b>	\$2,780	\$180	\$2,960	\$420		\$12,260
<b>Class 9</b>	\$2,780	\$180	\$2,960	\$1,500		\$13,340
<b>Class 10</b>	\$2,780	\$180	\$2,960	\$1,800		\$13,640
<b>Class 11</b>	\$2,780	\$180	\$2,960	\$1,800		\$13,640
<b>Class 12</b>	\$2,780	\$180	\$2,960	\$3,500		\$15,340

Invoiced 14 days before first day of term, payable on first day of term.  
 Building Fund donations are not included in School fees. This can be made voluntarily.  
 If child commences part way through the year, only Tuition fees are apportioned.  
 Interest charge of 9% p.a on balance owing is charged if fees remain unpaid by week 2 of term.  
 (This charge will not apply from 2019)

### Overseas school fees

**CRICOS 02335E**

See website for details

## Lorien Novalis - School fees

### Tuition fee

Fees are revised annually effective Term 1 each year, revision is announced at end of the school year,

### Family discounts on tuition fees per term

(Applicable from Kindergarten to Class 12)

	Primary Discount	Secondary Discount
Second child	\$440	\$625
Third child	\$1,075	\$1,420
Fourth child	\$1,075	\$1,420
Fifth child	\$1,075	\$1,420

Deducted from Tuition fees, in the terms School fees invoice

### Materials & Activities

2018 – Some activities are invoiced separately 2019 – All Activities will be included in term charge.

This charge covers most materials used in the classroom throughout the year.

Occasional extra class room materials may be needed. Lorien Novalis School Shop stocks Steiner Education supplies

Examples of activities, determined by school and class teacher each year and vary from year to year:

Winter Festival; Gymnastics; Swimming; Kayaking; Sailing; Day excursions (Sculpture by the Sea); Art workshops.

### \*Class trips

Compulsory curriculum based excursions above the regular tuition fee, determined by the class teacher.

The class trip durations start small and build up to 3 weeks.

Amount payable is dependent on class fund raising organised by class teacher and parents

These are annual estimates to use as a guide.

Invoiced prior to participation in activity, payable by due date prior to departure

### Levies

**Class 7 Text Book Levy (Refundable on exit if no damage & if all books returned)**

**Class 4 Musical Instrument deposit (Refundable on return)**

Invoiced term 1, payable on first day of term 1

## Lorien Novalis - Building Projects

### Voluntary - Building Fund Donations

Building fund donations are not part of tuition fees

Donations to the schools building fund contribute to the School's capital expenditure

The school suggests \$250 donation per family per term to contribute to the current building projects

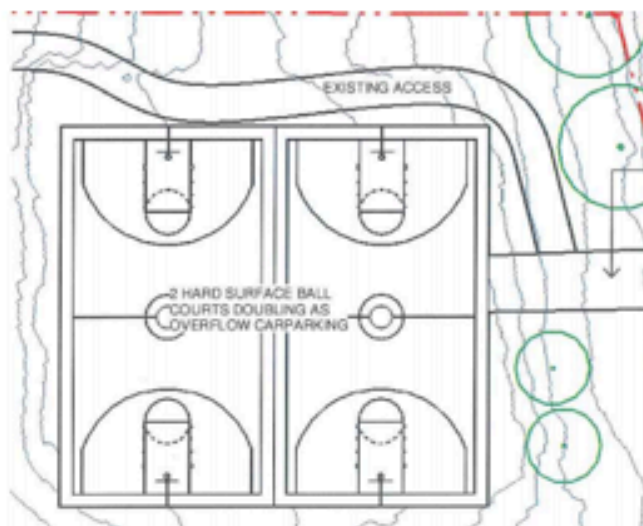
Donations are tax deductible  
All payment methods are welcome

Receipt is issued on payment, stating allowable tax deduction for your records

In 2018 the school acquired 5 acres adjacent to the existing 11 acre property. The new property includes a 2 story house with a stable. The house will become the school administration building. The existing administration building will be allocated to full use by the High School. The stable has already been converted to fully functional craft room for Primary students. The carport will be converted to High School gym. There are several levelled areas throughout the property, the first will become new hard surface sports ground, with dual purpose for overflow car parking. Other levelled areas will be used for expanded biodynamic farming and lower field grass playing sports ground.

#### Building projects:

- \* Installing Solar panels
- \* New School Entrance
- \* New over flow car park with sports facility
- \* More Classroom air conditioning
- \* New road way
- \* High School gym





CRICOS 02335E

School for Rudolf Steiner Education Ltd

ABN 93 000 946 289

These schedules are extracts from the School Community Booklet available in hard copy in the school office

Also available:

- Parent Handbook
- Early Childhood Booklet
- Primary School Curriculum Booklet
- High School Curriculum Booklet

Please also visit our website for more information

"The heart of the Waldorf/Steiner method is the conviction that education is an art – it must speak to the child's experience. To educate the whole child, their heart and will must be reached as well as their mind"  
Rudolf Steiner

456-460a Old Northern Rd, Dural  
PO Box 82, Round Corner  
NSW, Australia 2158

Ph: 02 9658 0700 Fax: 02 9651 1632  
General school email: [info@lorien.nsw.edu.au](mailto:info@lorien.nsw.edu.au)  
website: [www.lorien.nsw.edu.au](http://www.lorien.nsw.edu.au)

Accounts Receivable email: [lorienar@lorien.nsw.edu.au](mailto:lorienar@lorien.nsw.edu.au)